

Wideband V/UHF COMINT/DF System Family ■ ELK-7036



■ INTELLIGENCE, SURVEILLANCE, RECONNAISSANCE

General

ELK-7036 is a family of high performance COMINT/DF systems that intercept, analyze, identify, locate, and monitor V/UHF radio communication networks in the 20-3000 MHz frequency range. The systems are designed to operate in dense and complex communication environments, and to build a real-time tactical and strategic Communication Intelligence EOB picture.

Features

- Copes with dense communication environment
- Multi-channel wideband V/UHF radio interception and location
- Handles short transmissions (bursts), fixed and frequency hopping networks
- Automatic advanced multi-level screening algorithms for focusing system resources on high priority signals, for high system efficiency and low operator workload
- Multi-tasking operation at different frequency bands and bandwidths
- Graphic tools for spectrum analysis
- User friendly operation based on Graphic User Interface and geographic map display
- Stand-alone configuration or GPS-synchronized multi-system configuration for emitter location (FIX)



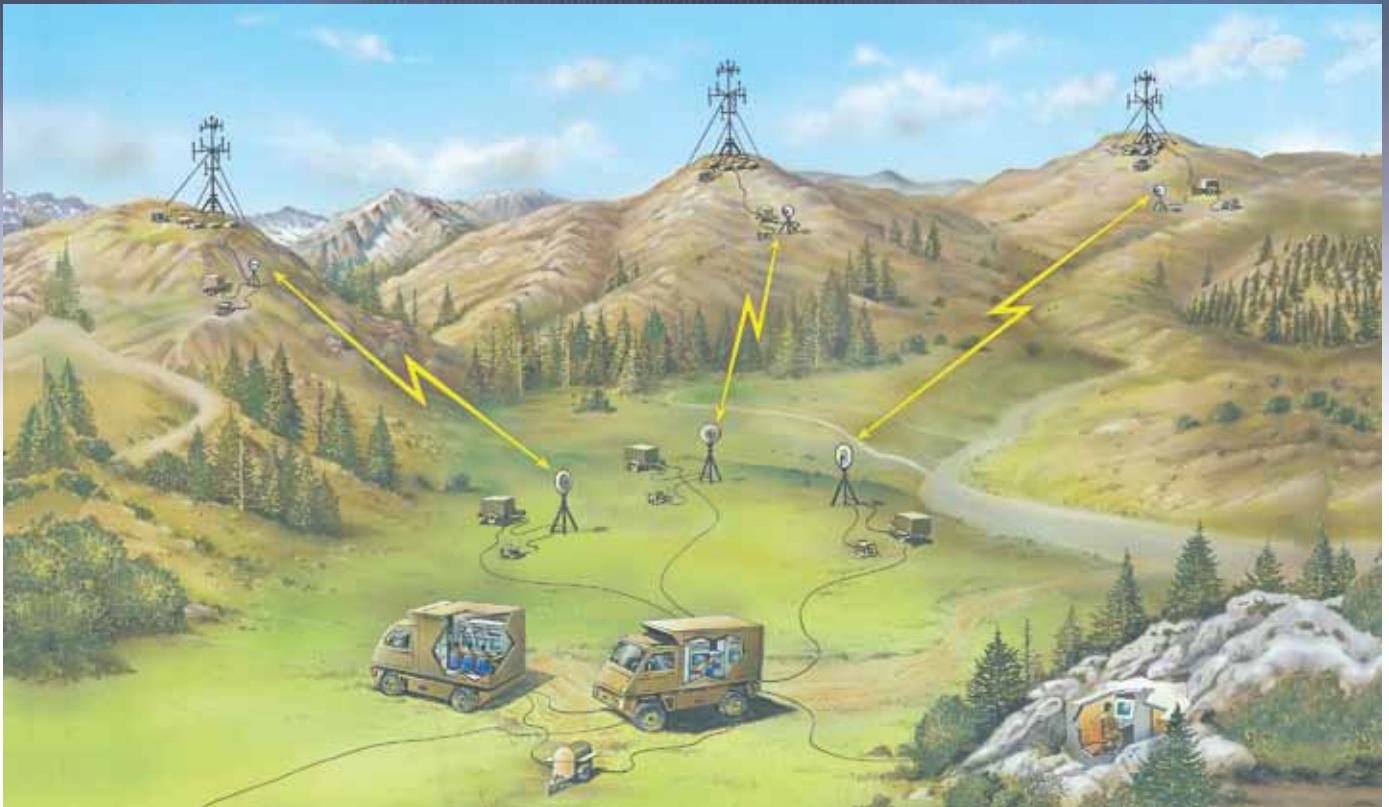
- Compact configuration applicable for Ground (fixed, transportable, mobile), Airborne and Maritime COMINT systems
- Fast deployment

Applications

- Provide mission-critical intelligence
- Build real-time Electronic Order of Battle (EOB) for tactical and strategic C⁴ISR Centers
- Communication Support Measures
- Support for Home-Land Security (HLS)
- Assist and control Jamming operations
- Early Warning sensors
- Link to Network Centric systems

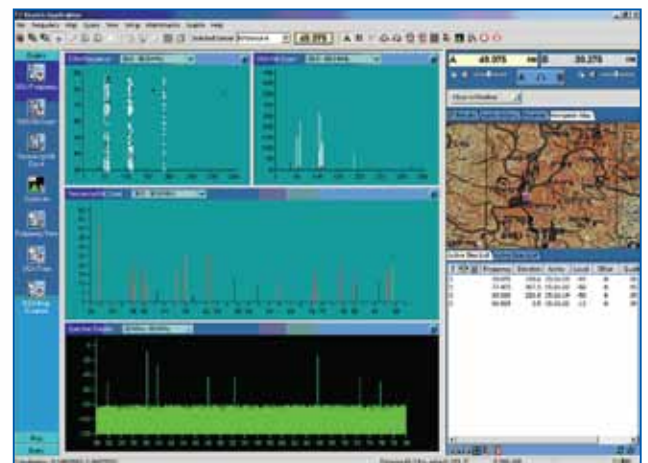


Wideband V/UHF COMINT/DF System Family ■ ELK-7036



WBDF Specifications

Frequency Range	20 MHz to 3000 MHz
Spatial Coverage	Azimuth: 360° Elevation: $\pm 10^\circ$ (with respect to horizontal plane)
DF Accuracy	1.5° RMS for 10 dB SNR at 25kHz
Azimuth Resolution	0.1°
Frequency Stability	1 ppm (0°C to + 50°C)
DF Sensitivity	1 μ V/m for SNR of 10 dB @ 25 kHz BW
3 rd order Dynamic Range	80dB min.
Total Dynamic Range (with AGC)	120dB
Noise Figure	12 dB, max.
Signal Modulations	AM, FM, CW, FSK, PSK
Instantaneous Processing BW	5 MHz (other BW optional)
Scan Rate	2.5 GHz/sec at 25 kHz RBW (other scan rates optional)



Typical Operator Screen

Image and IF Rejection	80 dB
Minimum signal duration for DF	5 ms
DF Resolution BW	6.25 kHz, 12.5 kHz, 25kHz

www.elta-iai.com

ISRAEL Tel: (972)8-857-2312/2410. Fax: (972)8-856-1872
E-mail: market@elta.co.il
U.S.A. Tel: (703)875-3726. Fax: (703)875-3770
EUROPE Tel: (33)1-46.40.47.47. Fax: (33)1-46.40.47.48.

The contents of this brochure are presented as general information only and are not meant to, nor do they, constitute any representation or warranty by ELTA Systems Ltd. The contents are not meant to serve or be used in substitution for the information contained in any approved specification, manual or the like issued by ELTA Systems Ltd. The contents shall not in any way add to, amend, delete or change any term of any contract in which ELTA Systems Ltd. is a party.

