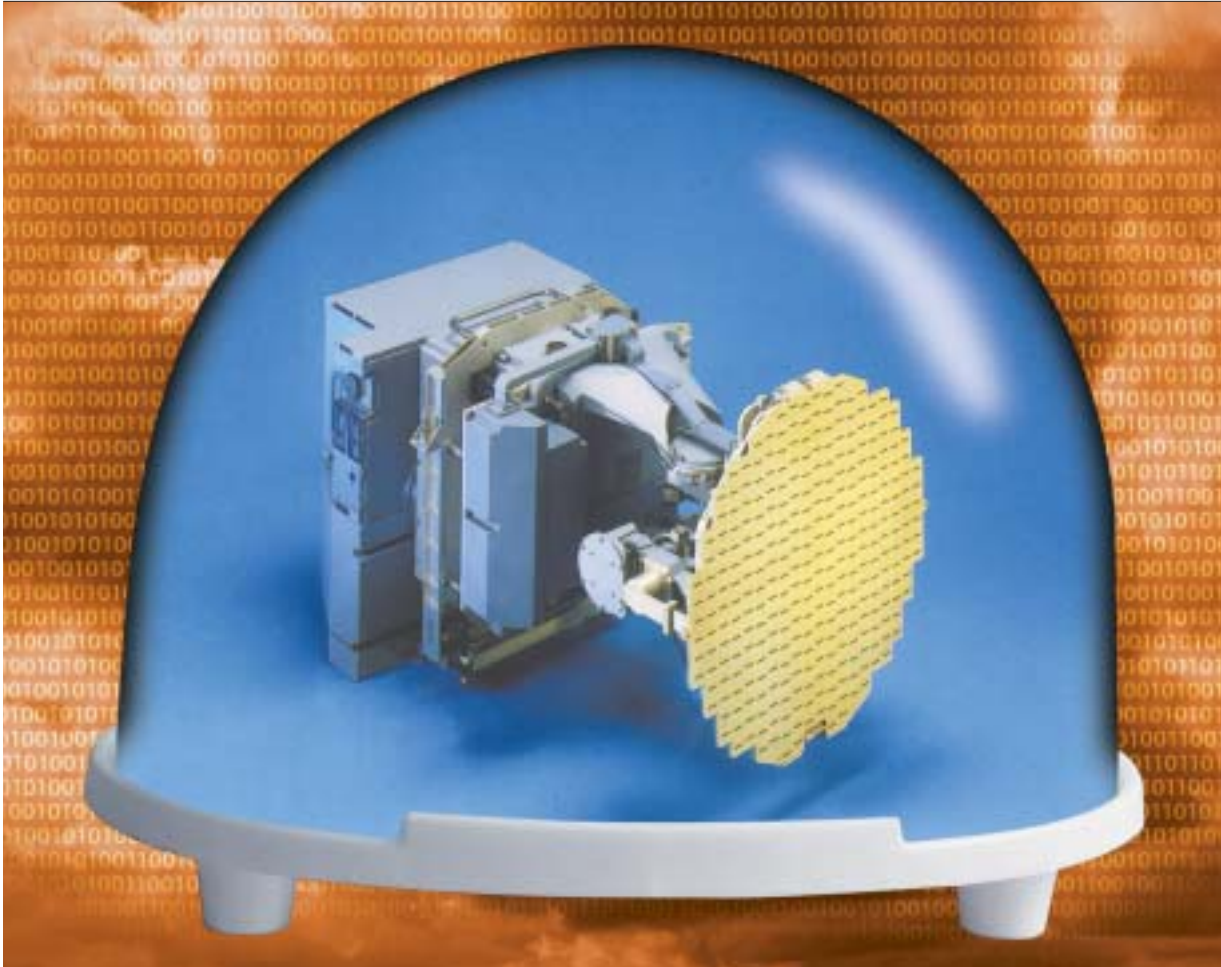


Multimode Airborne Fire Control Radar



General

The EL/M-2032 is an advanced Multimode Airborne Fire Control Radar designed for multimission fighters, oriented for both air-to-air and strike missions. Modular hardware design, software control and flexible avionic interfaces ensure that the radar can be installed in fighter aircraft (such as F-16, F-5, Mirage, F-4, Mig 21, etc.) and can be customized to meet specific user requirements. The EL/M-2032 radar integrates ELTA's experience with real operational feedback from Israeli Air Force combat pilots.

The EL/M-2032 greatly enhances the Air-to-Air, Air-to-Ground and Air-to-Sea capabilities of the aircraft. In the Air-to-Air modes, the radar enables long-range target detection and tracking for weapon delivery or automatic target acquisition in close combat engagements.

In Air-to-Ground missions, the radar provides very high-resolution mapping (SAR), surface target detection and tracking over RBM, DBS and SAR maps in addition to A/G ranging. In Air-to-Sea missions the radar provides long range target detection and tracking, including target classification capabilities (RS, ISAR).

Features

- Pulse Doppler, all aspect, look-down shoot-down capabilities.
- TWT coherent transmitter.
- Ultra low sidelobe planar antenna.
- Two axes monopulse, guard channel.
- Programmable signal processor.
- Full software control.
- Most advanced architecture, technology and components.
- Adaptability and growth potential.
 - MIL 1553B interface to avionic system.
 - Modular hardware configuration.
 - Spare memory space and computing power.

Multimode Airborne Fire Control Radar



Performance

- Air-to-Air detection and tracking range up to 80 NM.
- Air-to-Ground mapping, High Resolution Mapping and surface target detection up to 80 NM.
- Air-to-Sea detection, tracking and classification up to 160 NM.

Physical Characteristics

Weight: 72-100 Kg depending on antenna size.
 Power: 2-3 KVA. depending on Transmitter configuration.
 Antenna Size: adapted to aircraft nose limitations.

Operational Modes

Air-to-Air

- Range While Search (RWS)
- Single Target Track (STT)
- Track While Scan (TWS)
- Situation Awareness Mode (SAM)
- Dual Target Track (DTT)
- Raid Assessment (RA)
- Air Combat Modes (ACM)
 - Vertical Scan
 - Slewable ACM
 - HUD ACM
 - Boresight
 - Adaptive Boresight

Air-to-Ground

- High resolution mapping (SAR mode) with Image tracking
- SMTI over RBM DBS or SAR
- SMTT over RBM DBS or SAR
- Real Beam Map (RBM)
- Doppler Beam Sharpening (DBS)
- Air-to-Ground Ranging (AGR)
- Beacon (BCN)
- Weather (WA)

Air-to-Sea

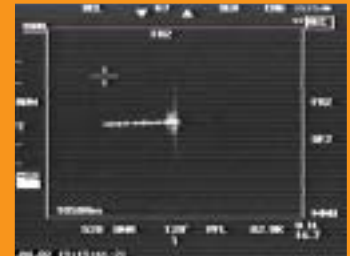
- Sea Search (SS)
- Sea Targets TWS
- Sea Target Continuous Track (STCT)
- Inverse SAR (ISAR) Sea target Classification
- Range Signature (RS) Sea target Classification



Target Optical image



Sea Search and RS Display



ISAR image



- 1 Air to sea detection and classification
- 2 Armory Museum SAR image
- 3 Airfield SAR image
- 4 Harbour SAR image
- 5 GMTI Over SAR image

www.elta-iai.com

ISRAEL Tel: (972)8-857-2312/2410. Fax: (972)8-856-1872 • e-mail: market@elta.co.il
 U.S.A. Tel: (703)875-3726/46. Fax: (703)875-3770 • EUROPE Tel: (33)1-46.40.47.47. Fax: (33)1-46.40.47.48.

The contents of this brochure are presented as general information only and are not meant to, nor do they, constitute any representation or warranty by ELTA Ltd. The contents are not meant to serve or be used in substitution for the information contained in any approved specification, manual or the like issued by ELTA Ltd. The contents shall not in any way add to, amend, delete or change any term of any contract in which ELTA Ltd. is a party.

IAI ELTA IMINT & Radar Division
 ELTA Systems Ltd.
 Group & Subsidiary of ISRAEL AIRCRAFT INDUSTRIES LTD.

Innovation. Solutions. Control.

INTELLIGENCE,
 SURVEILLANCE,
 RECONNAISSANCE

EARLY WARNING
 & CONTROL

DEFENCE
 & SELF-PROTECTION

TARGET ACQUISITION
 & FIRE CONTROL