



General

The EL/M 2106 NG - ELTA's fourth generation of 3D Tactical Air Defense Radars reflects ELTA's 35 years of experience in tactical military radars.

This 3D radar detects a wide variety of flying platforms, including low level high-speed fighter aircraft, hovering helicopters, low velocity ultra-light aircraft and UAVs.

The radar provides accurate range, azimuth and elevation angle measurements for each target, differentiating between aircraft and helicopters and classifying the helicopter type according to its blades returns.

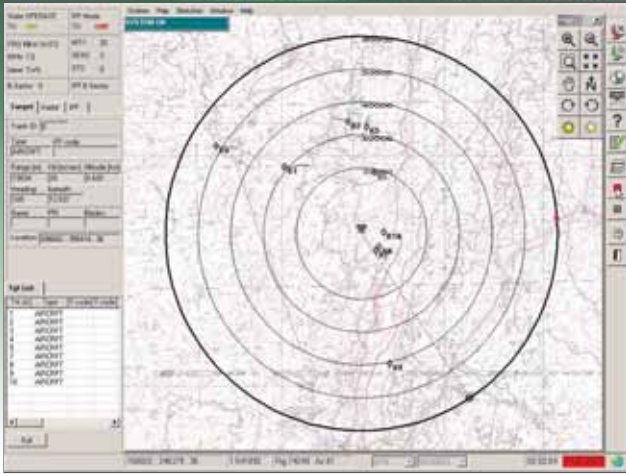
The EL/M 2106 NG can be operated as a local Air Defense C³ System providing warning and target designation to Surface-to-Air weapon systems, including MANPADS.

In addition, it can be also deployed as gap filler for supporting C3I centers for Air Traffic Control.

Features

- Automatic detection of airborne targets
- Track While Scan of up to 60 targets
- Operates 24/7 under all weather conditions
- Targets differentiation and classification
- Interoperability with Surface-to-Air weapon systems
- Integrated with IFF (option)
- Several radars can be fused into one integrated air surveillance picture.
- Low weight and low power consumption (750 W Typ.)
- Extensive BIT
- High MTBF (1500 Hr) and low MTTR (20 Minutes)
- Easy to operate PC-based control unit and display
- Standard power source
- Fast and easy deployment (in less than 15 minutes)

3D Tactical Air Defense Radar ■ EL/M-2106 NG



Operator Display



Mobile Installation

Applications

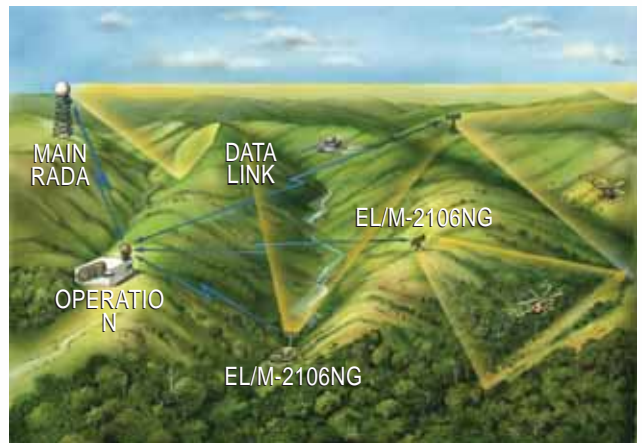
- Search radar to support surface-to-air weapon system
- Gap filler to main air defense radar system
- Local Air Defense C³ system
- Protection of sensitive sites

Installations

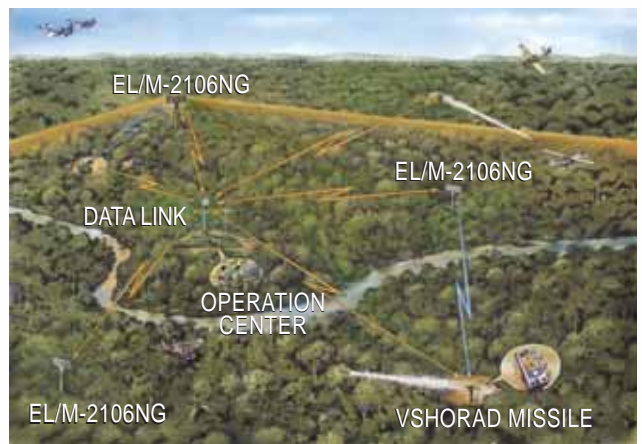
- Fixed, on tower
- Transportable on a quadripod
- On a vehicle or on a shelter

Specifications

<i>Detection Range:</i>	
Instrumental:	80Km
Fighter Aircraft:	40 - 60 Km
Hovering Helicopters	25 Km
Range Accuracy:	30 meters.
Azimuth Accuracy:	0.5°.
Elevation Accuracy:	2°.
Target Detection Velocity:	From 30km/hour
Transmission:	Peak - 400 W, L-Band, Solid State.
IFF Modes:	1, 2, 3/A, C (mode 4 optional).
Environmental Conditions:	MIL-STD-810F
EMC/EMI:	MIL-STD-461C
Power Requirements:	20-32 Volts D.C.
Operational Temperature:	(-30°C, +50°C).



Gap Filler Deployment



Air Defense Deployment

www.elta-iai.com

ISRAEL Tel: (972)8-857-2312/2410. Fax: (972)8-856-1872
 E-mail: market@elta.co.il
 U.S.A. Tel: (703)875-3726. Fax: (703)875-3770
 EUROPE Tel: (33)1-46.40.47.47. Fax: (33)1-46.40.47.48.

The contents of this brochure are presented as general information only and are not meant to, nor do they, constitute any representation or warranty by ELTA Systems Ltd. The contents are not meant to serve or be used in substitution for the information contained in any approved specification, manual or the like issued by ELTA Systems Ltd. The contents shall not in any way add to, amend, delete or change any term of any contract in which ELTA Systems Ltd. is a party.



Innovation. Solutions. Control.

www.elta-iai.com • E-mail: market@elta.co.il