

Rotary-wing  
Aircraft



Fixed-wing  
Aircraft



Unmanned  
Aircraft

# Lightweight Airborne Maritime Surveillance Radar

ELM-2022ML





# Lightweight Airborne Maritime Surveillance Radar

## ELM-2022ML

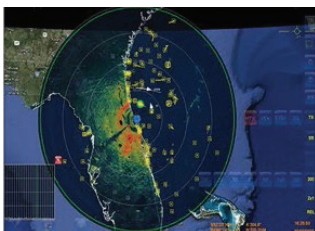
ELM-2022 is a combat-proven family long-range airborne multimode maritime surveillance radars designed for deployment on fixed-wing aircraft, helicopters and UAVs. Operating in X-Band, the ELM-2022ML is a lightweight version consisting of two LRUs and designed for reduced size weight and power requirements (SWaP). The ELM-2022 family is as a true all-weather, day and night sensor capable of penetrating clouds, rain, smoke, smog, fog and man-made camouflage. Modular hardware, flexible interfaces and antenna design, enable the ELM-2022 radars to be installed on a wide range of platform types.

With systems deployed worldwide, ELM-2022 radars have been continuously updated to utilize the vast operational experience that has been accrued as well as being upgraded with the latest available technologies. ELM-2022ML radars provide a highly effective and cost-competitive solution for the following maritime operational missions:

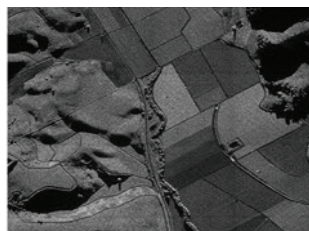
- Maritime Surveillance and EEZ Patrol
- Search and Rescue Location and Support
- Law Enforcement, Fishery Protection and Drug Enforcement
- Air-to-Air Surveillance
- Air-to-Ground (SAR and GMTI) Intelligence, Reconnaissance and Surveillance (ISR) Missions

### Features

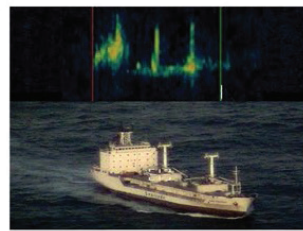
- Detection and automatic tracking of small targets in adverse sea conditions
- Range profile, ISAR and CSAR classification modes with automatic classification to class (ISAR library)
- Strip and spot Synthetic Aperture Radar (SAR) imaging and GMTI for ISR support for ground operation
- Navigation and weather mode
- Integrated IFF/AIS/ADSB system
- Advanced Ground Radar Operation Station (GROS) - optional for standalone operation (not included in weight)



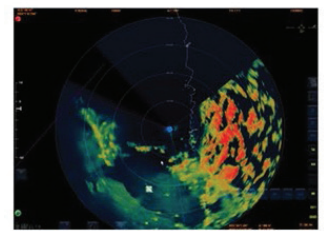
Sea Mode Display



Strip SAR Display



ISAR Mode Display



Navigation and Weather Mode Display

### Specifications

Description	Parameters
Detection range: small target	up to 200 nm
Detection range: medium to large targets	up to horizon
Power consumption	1.1 kW
Weight	54 kg

