



INTEGRATED NAVAL EW SUITE



The suite covers the spectrum from 1.5 MHz to 40 GHz with DF Accuracy better than 2° and performs automatic detection, classification, identification, geo-location as well as countermeasures.

KEY FEATURES

- Real-time SIGINT situation awareness picture
- AESA Jammer – simultaneous multibeam jamming and reception
- Communication Jamming - Jams targeted communication networks
- Automatic threats alert
- Operates in complex and dense environments
- Wide instantaneous frequency with 3600 coverage
- Includes LPI emitters interception and countermeasures
- High sensitivity and high probability of interception (HPDI)
- Can be provided as part of an integrated mast configuration



With the increasing complexity of naval warfare, including the nascent threat of unmanned platforms, new requirements have emerged for complete integrated solutions in place of independent sensor based systems. ELTA's Integrated Naval EW Suite incorporates field-proven Comms-ESM, Radar-ESM and EW/ECM sensors and jammers, in conjunction with AI analysis, to provide a unified solution delivering Situational Awareness Picture (SAP), Electronic Warfare capabilities, and robust countermeasure performance.

BENEFIT

- EW Suite Controller -
 - The suite seamlessly integrates with a ship's CMS (Combat Management System) over a single interface protocol.
 - Autonomous control of EW Suite's operation and co-existence with its modules
- The suite shares common resources for efficient spectrum coverage and parallel processing tasks. This consolidates excess and saves on space, power and other vital resources.
- Modular architecture
- Enhanced SIGINT capabilities using VTOL payloads
- Built-in cyber protection



Integrated Naval EW Suit

SUITE SENSOR AND SYSTEMS

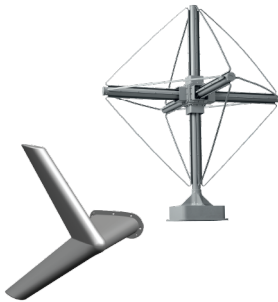
The suite is modular and can include any combination of the following ELTA ESM & EW products:



ELK-7071 C-ESM System for V/UHF

Intercept, analyze, identify, locate and monitor communication networks and datalinks in dense and complex communication environments - creating a real-time detailed and accurate Electronic Order of Battle (EOB)

- Frequency coverage: 20-6,000 MHz
- Interferometer
- Voice & Data processing



ELK-7065 C-ESM System for HF

Compact system designed for Shipborne and VTOL platforms.

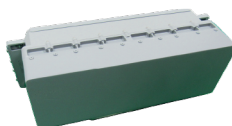
- Frequency coverage: 1.5-30 MHz
- Vector Sensor Array (VSA) instantaneous azimuth and elevation
- Voice & Data processing
- DF Accuracy - Better than 2° RMS



ELL-8385 R-ESM System

Advance system for interception and analysis of LPI emitters in dense naval environment.

- Frequency coverage: 0.5- 40 GHz
- Wide instantaneous frequency coverage for 3600
- Software defined 4 channels, direct digital processor



ELL-8256SB Naval ECM

Provides an advanced wideband RF ECM jamming system using AESA technology against all modern missile seekers and airborne/shipborne/coastal radar

- Simultaneous multibeam jamming and reception
- Wide frequency and spatial coverage
- High sensitivity and ERP

